



MERCY GATE
MINISTRIES

Human Trafficking 101

KARLA SOLOMON

HT EXPERT

Karla Solomon

Director of Outreach &
Training

HT Expert



MERCY GATE
MINISTRIES



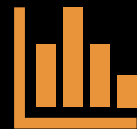
Objectives



Defining



Recognizing



Supporting



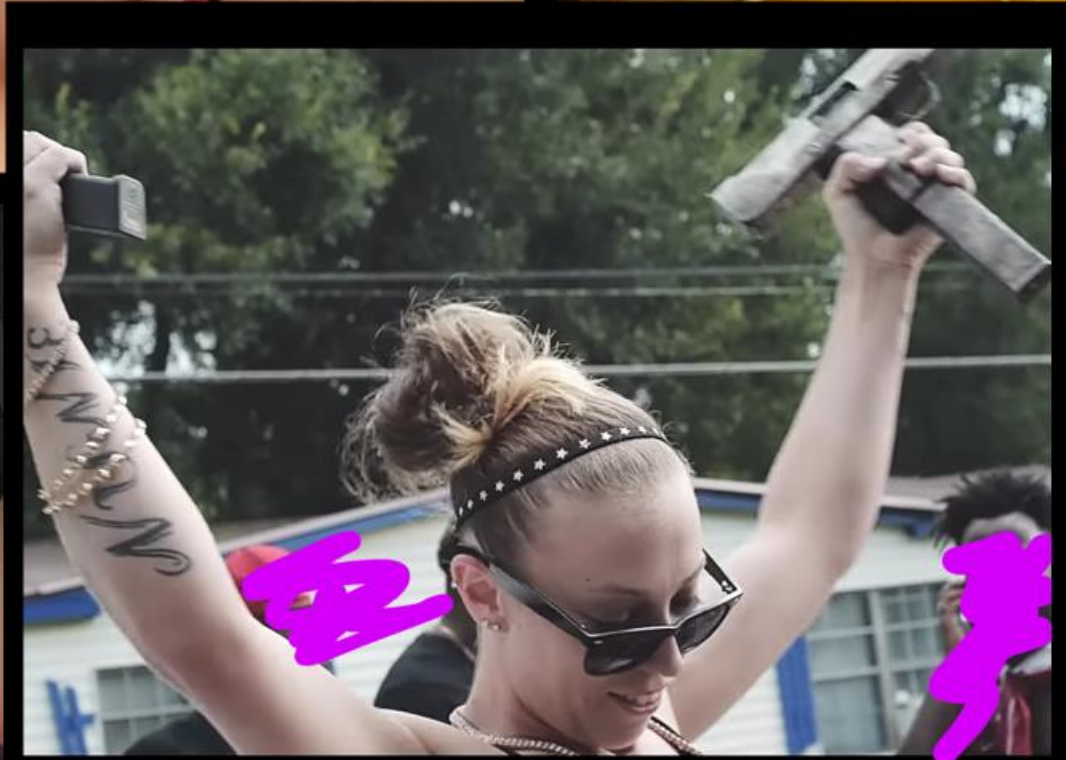
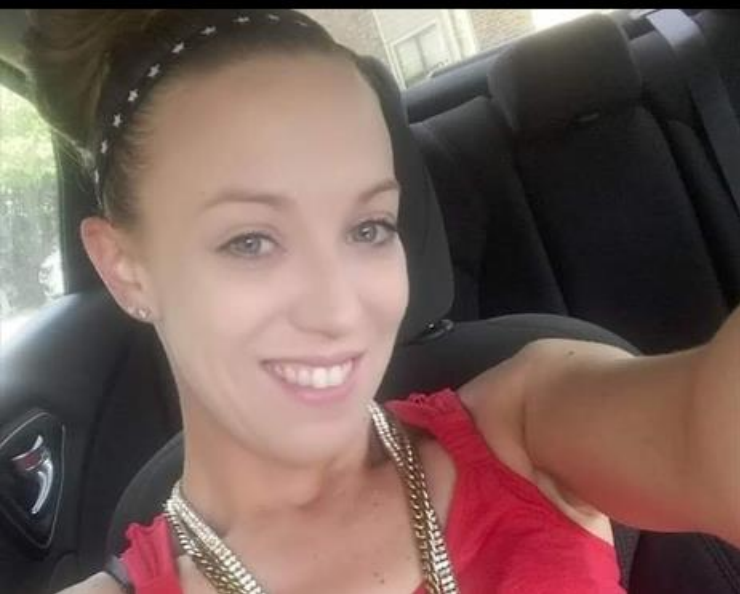
Let's take a Journey
together...

“CHILDREN WHO ARE
VICTIMS OF SEXUAL ABUSE
CARRY THE WEIGHT OF
INNOCENCE LOST, BUT
WITHIN THEM LIES THE
STRENGTH TO RECLAIM
THEIR LIGHT AND REWRITE
HISTORY”

-KARLA SOLOMON

















THE IMPACT IS DIFFERENT FOR EACH OF US

"In the labyrinth of trauma, each survivor's path is their own, navigating a terrain of emotions as diverse as the colors in a kaleidoscope. No two journeys through healing are alike, for the impact of trauma is a deeply personal tapestry woven from the threads of individual pain and strength."

— Karla Solomon



What is Human Trafficking?

Human trafficking involves the use of force, fraud, or coercion to obtain some type of labor or commercial sex act. Causing someone under the age of 18 to engage in a commercial sex act, regardless of using force, fraud, or coercion is human trafficking under U.S. Law.

Trafficking vs Smuggling

Trafficking

- ▶ Exploitation Based
- ▶ Crime against a Person

Smuggling

- ▶ Transportation Based
- ▶ Crime against a Border

Different Forms of Trafficking

- ▶ Sexual Exploitation
- ▶ Labor Exploitation
- ▶ Domestic Servitude
- ▶ Forced Marriage
- ▶ Forced Criminality
- ▶ Organ Harvesting



Federal & State Law

Actions

- Recruiting
- Harboring
- Transporting
- Providing
- Obtaining
- Soliciting
- Patronizing

Means

- Force
- Fraud
- Coercion

Purpose

- Commercial Sex Act
- Involuntary Servitude
- Debt Bondage
- Peonage
- Slavery

Examples of Force, Fraud & Coercion

Force

- Beating/Slapping
- Beating with Objects
- Burning
- Sexual Assault
- Rape/Gang Rape
- Confinement/Locked in
- Torture Practices
- Seasoning/Initiation

Fraud

- False promises
- Deceitful enticing & affectionate behavior
- Withholding wages
- Lying about working conditions
- Lying about promises of a better life
- Preying on desperation & poverty
- Blackmail, extortion

Coercion

- Threats of serious harm or restraint
- Threatened abuse of legal process
- Intimidation/Humiliation
- Emotional Abuse
- Climate of Fear
- Modeling abusive behavior
- Controlling daily life skills
- Creating dependency
- Establishing quotas

TVPA- Prevention Prosecution Protection

Sex Trafficking is Defined as:

- “the recruitment, harboring, transportation, provision, or obtaining of a person for the purpose of a commercial sex act.”

Severe Forms of Trafficking in Persons is:

- sex trafficking in which a commercial sex act is induced by force, fraud, or coercion, or in which the person induced to perform such an act has not attained 18 years of age; or
- the recruitment, harboring, transportation, provision, or obtaining of a person for labor or services, through the use of force, fraud or coercion for the purpose of subjection to involuntary servitude, peonage, debt bondage, or slavery.

State Stats

Texas
In
2020

185 Arrests

28 Convictions

3510 Signals Sent

993 Cases Identified

Over 25% were Children

743 Cases were Sex Trafficking

116 Labor Trafficking

60 involved Labor & Sex trafficking

Labor Trafficking



- ▶ Manufacturing
- ▶ Factory Work
- ▶ Hospitality
- ▶ Food Service
- ▶ Construction
- ▶ Large Events
- ▶ Agriculture
- ▶ Landscaping
- ▶ Car Washes
- ▶ Health & Beauty
- ▶ Begging Rings
- ▶ Traveling Sales Crew

Labor Trafficking Indicators

- ▶ Workplace abuse/restrictions
- ▶ Owes a debt and unable to pay it off
- ▶ Not in control of his/her own identifying documents
- ▶ Recruited through false promises
- ▶ Unpaid or paid very little
- ▶ Threat of exposure/report to Law Enforcement

Labor Trafficking Indicators – Health Related

Behavioral

- ▶ Anxiety/Panic attacks (shortness of breath, chest pains.)
- ▶ Unexplained/Conflicting stories
- ▶ Overly vigilant or paranoid behavior
- ▶ Inability/Aversion to make decisions independent of employer
- ▶ Inability/Aversion to speak without an interpreter
- ▶ Affect dysregulation/Irritability

Physical

- ▶ Musculoskeletal & ergonomic injuries
- ▶ Malnutrition/Dehydration
- ▶ Lack of routine screening & preventative care
- ▶ Poor dental hygiene
- ▶ Untreated infections/Inflammations
- ▶ Injuries or illness from exposure to harmful chemicals/unsafe water
- ▶ Ophthalmology issues
- ▶ Vision complaints
- ▶ Somatization



SEX TRAFFICKING

is the recruitment, harboring, transportation, provision, obtaining, patronizing, or soliciting of a person for the purpose of a commercial sex act in which a commercial sex act is induced by force, fraud, or coercion, or in which the person induced to perform such act has not attained 18 years of age.

SEXUAL EXPLOITATION

is the abuse of a position of vulnerability, differential power, or trust to profit monetarily, socially or politically from the labor or commercial sex work of another.



Sex Trafficking vs Prostitution

If a person is in “prostitution” or “consensual commercial sex” BUT they are

- ▶ held in service through psychological manipulation and/or physical force
- ▶ being exploited to pay off a debt
- ▶ under threats of serious harm against them or someone they love
- ▶ being blackmailed for sex
- ▶ trading themselves for basic or survival needs (shelter, food, drugs, etc.)
- ▶ Or are under 18 years of age

THEY ARE A TRAFFICKING VICTIM!

Sexual Exploitation

- ▶ Home
- ▶ Hotel/ Motel Based
- ▶ Street Based
- ▶ Massage/sauna
- ▶ Escort agencies
- ▶ Commercial Front Brothels
- ▶ Pornography
- ▶ Online
- ▶ Truck Stop Based
- ▶ Forced marriage
- ▶ Sporting Events
- ▶ Strip Club Based



IDENTIFYING HUMAN TRAFFICKING IN HEALTHCARE SETTINGS



87.8%

of human trafficking survivors reported having contact with a healthcare provider while they were being trafficked.



63.3%

of those who had contact in healthcare settings were treated in an emergency room.

Basic Indicators – ABC's

Appearance

Clothing

Visible injuries

Malnourishment

Few or no personal possessions

Branding tattoos

Signs of drug/alcohol abuse

Demeanor - Fear, anxiety, depression, submissive, tense, nervous, paranoid, hypervigilance

Behavior

Eye Contact

Frequent travels

Over controlling companion

Over sexualized behavior

Substandard Living/Homelessness

Not in Possession of their own Identifying Documents

Not in control of their own finances

Communication

Rehearsed Answers

Companion Speaking for them

Inconsistencies in their stories

Different aliases

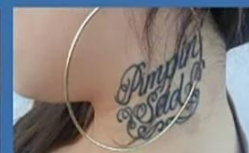
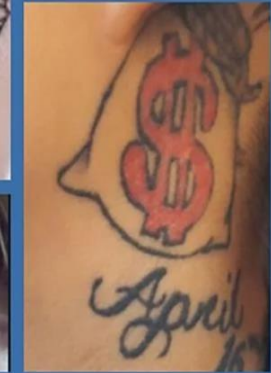
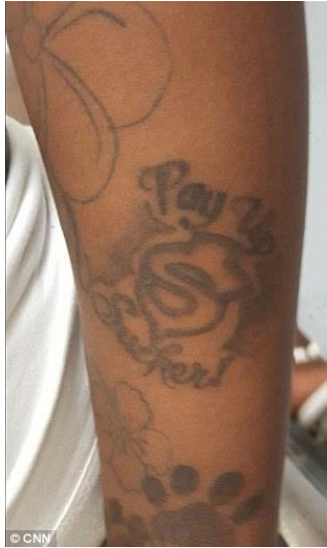
Uses language from "the life"

Restricted/Controlled Communication

Not familiar with whereabouts

Just Visiting

Examples of Branding Tattoos



Youth Specific Indicators

- ▶ History of running away from home or foster care placements
- ▶ Truancy/Stops attending school
- ▶ Highly sexualized behavior or dress
- ▶ Angry/Aggressive with Authority Figures
- ▶ Depressed mood/Flat affect
- ▶ Signs of drug or alcohol abuse
- ▶ Pregnancy at young age
- ▶ Early sexual initiation
- ▶ Symptoms of STIs and/or UTIs
- ▶ Abnormal number of sexual partners for young age
- ▶ Suspicious tattoos or branding



Health Related Indicators - Youth

Physical

- ▶ History of running away from home or foster care placements
- ▶ Truancy/Stops attending school
- ▶ Highly sexualized behavior or dress
- ▶ Angry/Aggressive with staff
- ▶ Depressed mood/Flat affect
- ▶ Signs of drug or alcohol abuse

Behavioral

- ▶ Pregnancy at young age
- ▶ Evidence of abortions at young age
- ▶ Early sexual initiation
- ▶ Trauma to vagina and/or rectum
- ▶ Symptoms of STIs and/or UTIs
- ▶ Abnormal number of sexual partners for young age
- ▶ Suspicious tattoos or branding

Health Related Indicators - Adults

Physical

- ▶ Multiple or recurrent STIs
- ▶ Abnormally high number of sexual partners
- ▶ Trauma to vagina and/or rectum
- ▶ Impacted tampon in vagina
- ▶ Signs of physical trauma
- ▶ Somatization symptoms (recurring headaches, abdominal pain, etc.)
- ▶ Suspicious tattoos or branding

Behavioral

- ▶ Depressed mood/Flat affect
- ▶ Anxiety
- ▶ Hypervigilance
- ▶ Panic attacks
- ▶ Affect dysregulation/Irritability
- ▶ Frequent emergency care visits
- ▶ Unexplained/Conflicting stories
- ▶ Using language from “the life”
- ▶ Signs of drug or alcohol abuse

Common Injuries/Complaints

- ▶ Unwanted pregnancy
- ▶ Anxiety
- ▶ Depression
- ▶ Suicidal ideation
- ▶ Somatization
- ▶ Substance use
- ▶ HIV
- ▶ Hepatitis
- ▶ Back pain
- ▶ Headaches
- ▶ Fractures
- ▶ Broken Bones
- ▶ Contusions
- ▶ Burns
- ▶ Dental complaints
- ▶ Vaginal/rectal bleeding
- ▶ Pelvic pain
- ▶ Sexually transmitted infections

Secondary Injuries

- ▶ Sleeping disorders/ continued nightmares
- ▶ Constant flashbacks/intrusive thoughts
- ▶ Extreme tension and anxiety
- ▶ Irritability/outburst of anger
- ▶ Non-responsiveness or lack of involvement with the external world
- ▶ Prolonged feelings of detachment or estrangement of others
- ▶ Memory trouble





Each victim will
respond
differently, no
two individuals
are alike

7 Stages of Trauma

Bonding

- Trust and Dependency
- Criticism
- Manipulation & Gaslighting
- Resignation & Giving Up
- Loss of Self
- Addiction Cycle



Signs of Trauma Bonding



- ▶ Keeping secrets from friends or loved ones about what is going on in the relationship.
- ▶ Defending the partner's actions to others.
- ▶ Trying to make sense of the situation.
- ▶ Having friends who say they are worried about the person/victim.
- ▶ Works hard to remind themselves that their partner loves them.
- ▶ Get fearful when they think about breaking up or leaving the relationship.
- ▶ Blame themselves for their behavior.

Impact of Trauma

Post Traumatic Stress Disorder (PTSD)

Recurrent thoughts/Re-living the event
Recurrent nightmares/Trouble sleeping
Feeling detached/Withdrawn behavior
Easily startled/Unable to concentrate

Memory Disruption & Anxiety Disorders

Decreased/Disjointed memory
Inability to recall traumatic events accurately
Memories are triggered by related sensory information
Agoraphobia, Separation, General, Obsessive Compulsive, Social

Trauma Bonding (Stockholms Syndrome)

Demonstrated loyalty and concern for the trafficker
Unwillingness to report or testify against the trafficker
Returning to the trafficker



Case Study

- ▶ Why would someone lie about their age?
- ▶ Is Jasmine a potential victim of human trafficking? Why or why not?



The Demand

- ▶ Victims are sold 5-6 times a day, 7dw/365dy
- ▶ That = 2000 sex acts per year
- ▶ The average daily quota is approx. \$2000 a day
- ▶ = \$730,000 for one year, for one victim
- ▶ 75% of runaway youth are approached within 48 hours by a trafficker because the prospect of a warm bed and a hot meal make them an easy target

And unlike drug trafficking where they have to restock their products, a trafficker just has to keep this person alive no matter their condition.



Grooming Process: A Path to Exploitation

Identifies a Victim
Builds Their Trust
Meets Their Needs
Isolates
Exploits
Maintains

Grooming is the gradual process traffickers use to control and manipulate vulnerable individuals into trafficking situations.



Different Types of Traffickers

Pimp-Controlled Trafficking

Individual is trafficked by an unrelated individual, male or female, who often develops an intentional relationship with the victim which is later used as leverage in the exploitation.

Familial Trafficking

A child is trafficked by a relative or a person who is perceived by the child to be a family member or close family friends such as individuals referred to as “auntie” or “uncle” but are not directly related to the child.

Gang-Controlled Trafficking

Individual is trafficked by a member of a gang or trafficked by the gang. Gangs leverage their organizational structure, violence, and local, national, and international networks to instill fear and loyalty in the victim.

Buyer-Perpetrated Trafficking

Individual is being trafficked but does not have a trafficker. Instead, the buyer is directly exploiting the persons vulnerabilities by offering money, food, drugs and/or shelter in exchange for the sexual exploitation.



Most Common Forms of Trafficking in Our Communities

CHILDREN

When a family member experiences substance abuse and does not have the money to pay for drugs, often their children become a source of payment. This type of exploitation is called familial trafficking. In a recent study, 64% of familial traffickers were mothers and in 82% of these cases, drugs were the currency used to profit from the exchange.





ADULTS

An individual trafficked by an unrelated person, male or female, who often develops an intentional romantic relationship with the victim which is later used as leverage is known as pimp-controlled trafficking.

An individual being trafficked but does not have a trafficker. Instead, the buyer is directly exploiting the persons vulnerabilities by offering money, food, drugs and/or shelter in exchange for the sex acts. This is commonly referred to as "Survival Sex".





Rules of “The Game”

- ▶ “Daddy”: Victims under a pimp’s control must never know his real name or identity and refer to him exclusively as “daddy.”
- ▶ Eye Contact: Never make eye contact with another pimp. If this rule is broken, you suffer serious physical violence.
- ▶ “Pimps Up, Ho’s Down”: victims must always exist in “lower” ways than the pimp.
- ▶ A victim who doesn’t follow the rules is severely reprimanded or forced into what is known as a “pimp circle.”
- ▶ Quotas: pimps establish nightly monetary quotas that the victims under their control must make in order to end each night. If the quota is not met there will be punishment.

Language “In The Life”

Stable: A group of victims who are under the control of a single pimp.

Renegade or Rogue: A person involved in prostitution without a pimp.

John, Buyer or Trick : An individual who pays for or trades something of value for sexual acts.

Reckless Eyeballing: A term which refers to the act of looking around instead of keeping your eyes on the ground.

Hierarchy of Authority



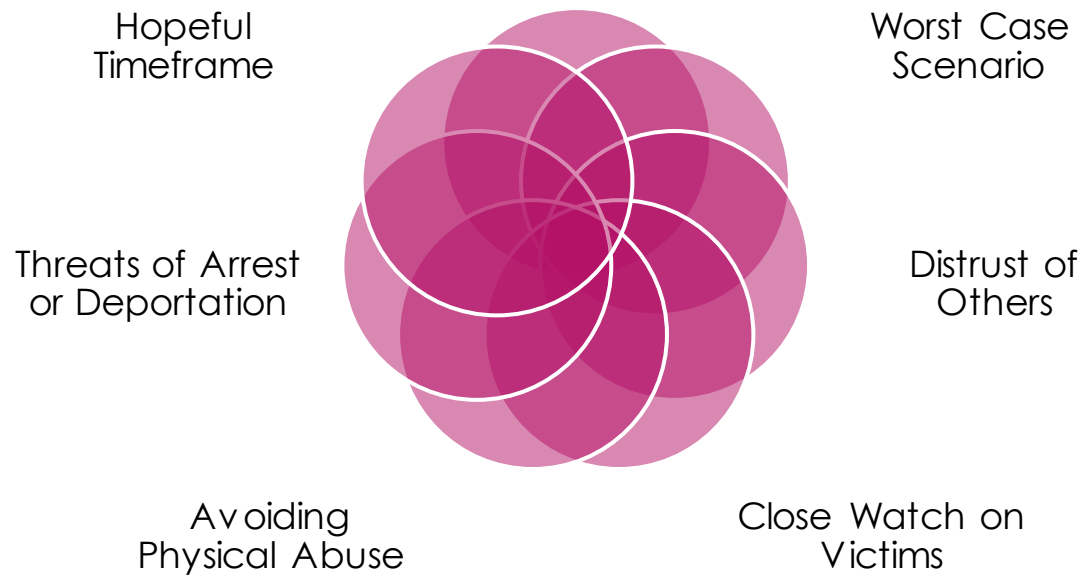
Pimp

Bottom

Stable

7 Most Common Manipulation Tactics

Dehumanization



Drugs & Trafficking

- ▶ Induce Compliance
- ▶ Create Dependency
- ▶ Feed a “habit”
- ▶ Punish an Unwilling Victim
- ▶ Cope with “stress”
- ▶ Lure in a Victim
- ▶ Criminalize a Victim
- ▶ Incapacitate a Victim

Pornography & Trafficking

- ▶ **Modern Day Sexual Education**
- ▶ **America is the #1 producer and exporter of child pornography in the world**
- ▶ **In America, more than 40 million people regularly visit porn sites**
- ▶ **90% of teens and 96% young adults encourage or accept porn as part of society**
- ▶ **Only about 50% of adults believe porn is wrong**
- ▶ **Teens and young adults 13 – 24 yo believe not recycling is worse than pornography**

- 
- ▶ Captivity/Confinement
 - ▶ Frequent Accompaniment
 - ▶ Use & Threat of Violence
 - ▶ Fear
 - ▶ Threats towards loved ones
 - ▶ Shame
 - ▶ Self Blame
 - ▶ Dependency
 - ▶ Debt Bondage
 - ▶ Loyalty
 - ▶ Social Barriers
 - ▶ Not Familiar w/surroundings
 - ▶ No Personal Documents
 - ▶ Distrust in Law Enforcement
 - ▶ Misinformation & False Promises
 - ▶ Hopelessness/Resignation
 - ▶ Lack of Knowledge of Social Services



Barriers to Self Identification

Victim Centered Approach

- ▶ A victim-centered approach means, the victim's wishes, safety, and well-being take priority in all matters and procedures.
- ▶ Service providers and law enforcement partnerships are crucial to the provision of a comprehensive and victim-centered response to human trafficking

Behavior of a Victim

- ▶ Hostility
- ▶ Failure to Cooperate
- ▶ Memory Loss/Lapses
- ▶ Outbursts that appear irrational
- ▶ Disorientation
- ▶ Continued anxiety despite “being safe”
- ▶ Exhaustion
- ▶ Reconstructing and Remembering Constantly

INTERVIEWING

- Learn the language & subculture
- Understand where they are coming from
- Be prepared to ask “hard” questions
- Tell the story backwards
- Establish Trust
- Address Immediate Needs before Starting Interview
- Open Ended Nonjudgmental Questions
- Practice Active Listening
- Empowerment
- Consider Multiple Interviews
- Simple Choices
- Trauma Informed Approach
- Cultural Awareness
- Nonconfrontational

INTERVIEWING

- Offer More Breaks During Interview
- Avoid Leading Questions
- No matter how crazy the story sounds, listen and believe them
- If you can, assure victim measures are being taken to protect them and loved ones
- Never Make Promises You Can Not Keep
- Keep “door” to communication open
- Avoid judgement of them or their situation
- Connect or Provide Info to Appropriate Support Services
- Frequent Check ins
- Avoid Excessive sympathy
- Don’t argue or question their actions
- Do not shame or blame the victim
- Don’t assume you know the answer
- Do not interrogate
- Do Not Press Issues, but Interview Time

A glass bottle with a cork and a rolled-up scroll inside, floating on water. The bottle is tilted and the scroll is visible through the glass. The water is dark blue and has ripples around the bottle.

Offer Resources for Help

Merry
Kate



A close-up portrait of Chae Spencer, a woman with long, wavy blonde hair and blue eyes. She is wearing a dark green, high-necked top and has a slight smile on her face. The background is a blurred office setting with a bookshelf.

Chae Spencer
Executive Director

Emergency Contacts

- ▶ **Immediate danger or Emergency, Call 911**
- ▶ **Hill Country Crisis Council 830-257-2400**
- ▶ **STOP Task Force Hotline Number 1-844-843-6348**
- ▶ **National Human Trafficking Hotline 1-888-373-7888**
- ▶ **Text: 233733(BEFREE)**
- ▶ **Mercy Gate Ministries 830.367.3285**
www.mercygateministries.com



Upcoming Events

Human Trafficking 101: Complexities of Victim Defendants (6 CLE hrs + 2 hrs Ethics) March 22nd @ Marriott NW, San Antonio

Eyes Wide Open Summit
April 12th location San Antonio
In Partnership with For Freedom Initiative

Journey to Freedom Fundraiser
May 2nd @ Moon Shadow Haven
Kerr County